



Environment
Canada

Canadian Wildlife
Service

Environnement
Canada

Service Canadien
de la faune



Ducks Unlimited Canada

Annual British Columbia Conservation Areas Summary Report 2013

British Columbia NGO Conservation Areas
Database Technical Working Group

November 28, 2014

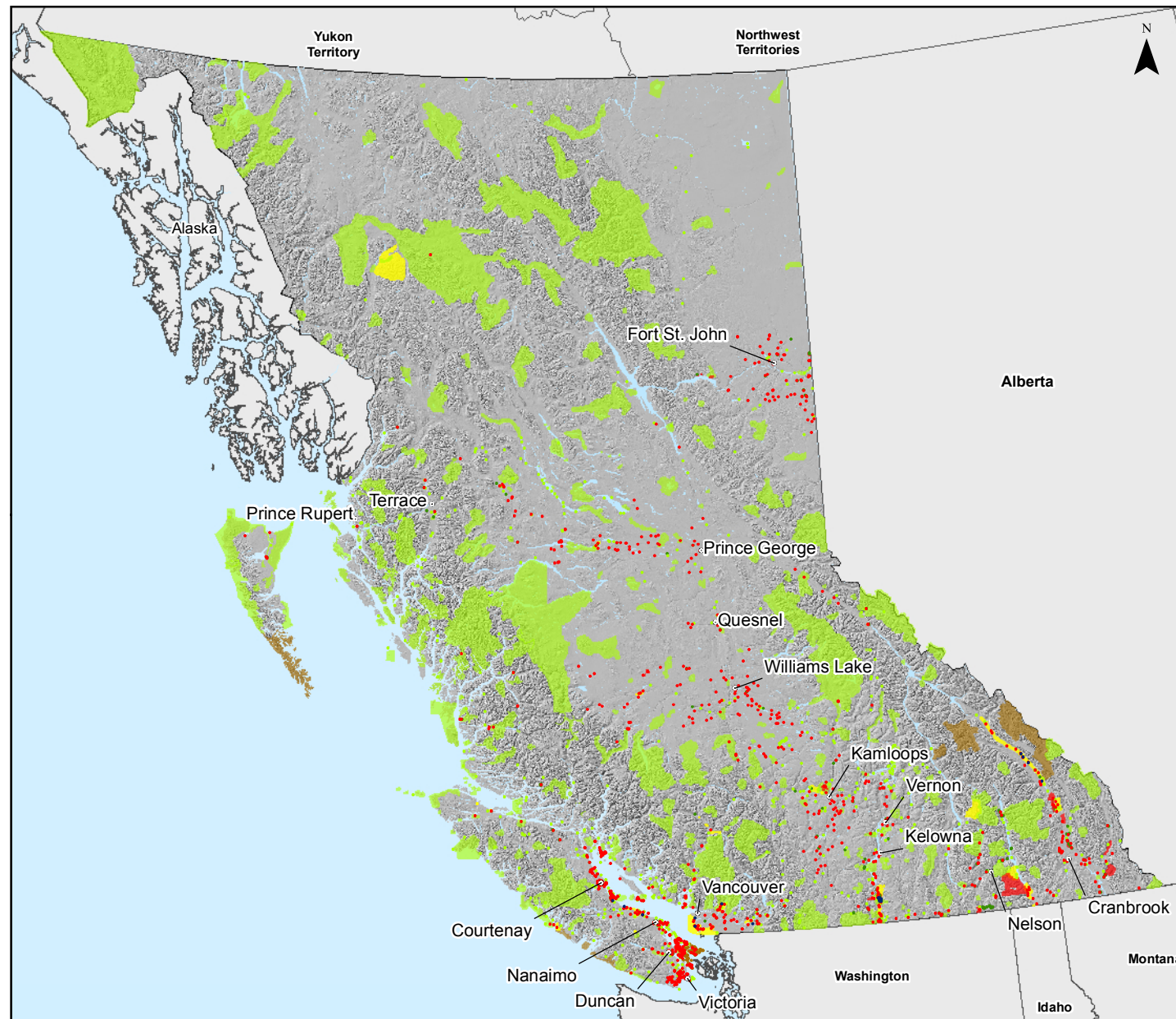
About the BC NGO Conservation Areas Database:

Conservation partners have collaborated for a number of years as part of the British Columbia Non-governmental Organization (BC NGO) Conservation Areas Database Working Group to develop a comprehensive, standardized inventory of British Columbia's non-governmental conservation areas (also known as private conservation lands). These areas include properties designated as Fee Simple, Registerable Interests, and Unregisterable Interests and complement the inventories created by the Federal and Provincial Governments for federal and provincial protected areas. The BC NGO Conservation Areas Database was developed from cadastral mapping of legal parcels by local governments. The attributes of each conservation parcel were populated with information obtained from the conservation partners as well as by searching land titles.

Fee Simple is defined as ownership of the title to a legal parcel. Registerable Interests are other conservation securements registered on title, specifically conservation covenants and leases. Conservation covenants are a voluntary and legally binding interest on all or a portion of a legal parcel. The title is retained by the landowner, but the covenant and covenant holder (e.g. conservation organization) is registered on the title and binds the current and future owners of the parcel in how the land is used. Leased lands are managed for conservation similar to Fee Simple properties and are usually long term. There are some leases that are not registered on title and have not been included in the conservation areas data. Unregisterable Interests are conservation securements not registered on title, primarily conservation agreements but include other types of agreements as well. Conservation Agreements are voluntary arrangements with land owners to manage the land, or a portion of the land, with a particular objective. Importantly, overlapping ownership and/or management arrangements can occur on a single legal parcel. For instance, the purchase of a Fee Simple parcel may have been cost-shared with two or more conservation organizations who are all registered on the title. This same parcel may also have a conservation covenant registered and held with another organization.

Technical development of the database is led by the Technical Working Group, namely Ducks Unlimited Canada, The Nature Trust of British Columbia and the Canadian Wildlife Service of Environment Canada. Project direction and coordination is led by the General Working Group members, which in addition to the Technical Working Group includes the Nature Conservancy of Canada and The Land Trust Alliance of British Columbia. The conservation areas of more than forty conservation organizations are included in the database. The conservation parcels are produced with the cooperation of the Integrated Cadastral Information Society, which is coordinating the development of a standardized legal parcel fabric among British Columbia's local governments, utilities, assessment office, land titles office, and the Provincial Government.

The Annual British Columbia Conservation Areas Summary provides the most accurate identification of total conservation area in BC. Since NGO conservation areas may overlap with some Provincial and Federal conservation areas, the calculation for the total area of conservation lands in BC removes this overlap. Although Regional and Municipal Parks also add to the conservation land in BC, these data were not in a format that could be easily included in the current totals and are intended to be included in future iterations of the Annual BC Conservation Areas Summary Report.



British Columbia Conservation Areas

Non-governmental Organization Conservation Areas

- Fee Simple, Covenants and Other Registered Interests on Title, Agreements and Other Unregistered Interests Not on Title*

Provincial Protected Areas

- Provincial Parks, Ecological Reserves, Recreation Areas, Protected Areas, and Conservancies
- Wildlife Management Areas
- Ministry of Forests, Lands, and Natural Resource Operations Acquisition, Lease, and Transfer of Administration and Control Lands

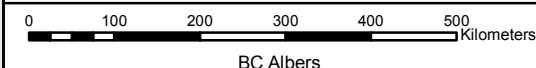
National Protected Areas

- National Parks
- National Wildlife Areas and other National Protected Areas

Points represent conservation areas that are less than 500 hectares; polygons represent those that are greater than 500 hectares.

Some points may be obscured by overlying points

*Accuracy of some conservation areas has not yet been quality assured by respective securement organizations.



BC NGO Conservation Areas Database Technical Working Group:



Conservation Area Type	Conservation Area Subtype	Hectares	
Non-governmental Organization Conservation Areas	Fee Simple	102,085.6	Since NGO conservation areas may contain overlapping ownership and/or management arrangements (eg subtypes), the calculation of "Total Area" of conservation lands in BC removes this overlap to provide a true conservation area value.
	Covenants and Other Registered Interests on Title	15,935.6	
	Agreements and Other Unregistered Interests Not on Title ¹	160,247.6	
Provincial Protected Areas	Provincial Parks, Ecological Reserves, Recreation Areas, Protected Areas, Conservancies ²	14,075,067.6	
	Wildlife Management Areas	251,231.2	1. The area value contains some uncertainty. It is sourced directly from respective securement organizations, Ducks Unlimited Canada and the Nature Conservancy of Canada.
	Ministry of Forests, Lands and Natural Resource Operations Administered Lands ³	22,643.1	2. The area value is derived from GIS data and may vary from published BC Parks numbers as these are based on legal size.
National Protected Areas	National Parks	631,230.7	3. Consists of Acquisition, Lease, and Transfer of Administration and Control lands only. FLNRO WMA Leases are included with Wildlife Management Areas.
	National Wildlife Areas and Other National Protected Areas (Canadian Wildlife Service)	3,060.0	4. Total Area may change as uncertainty is reduced for Agreements and Other Unregistered Interests Not on Title.
Total Area ⁴		15,233,102.2	

British Columbia Conservation Areas: Vancouver Island

Non-governmental Organization Conservation Areas

- Fee Simple
- Covenants and Other Registered Interests on Title
- Agreements and Other Unregistered Interests Not on Title*

Provincial Protected Areas

- Provincial Parks, Ecological Reserves, Recreation Areas, Protected Areas, and Conservancies
- Wildlife Management Areas
- Ministry of Forests, Lands and Natural Resource Operations Acquisition, Lease, and Transfer of Administration and Control Lands

National Protected Areas

- National Parks
- National Wildlife Areas and other National Protected Areas
- Highways

Points represent conservation areas that are less than 500 hectares; polygons represent those that are greater than 500 hectares.

Some points may be obscured by overlying points.

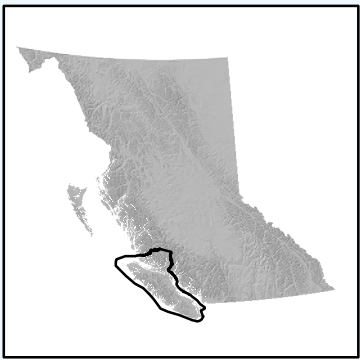
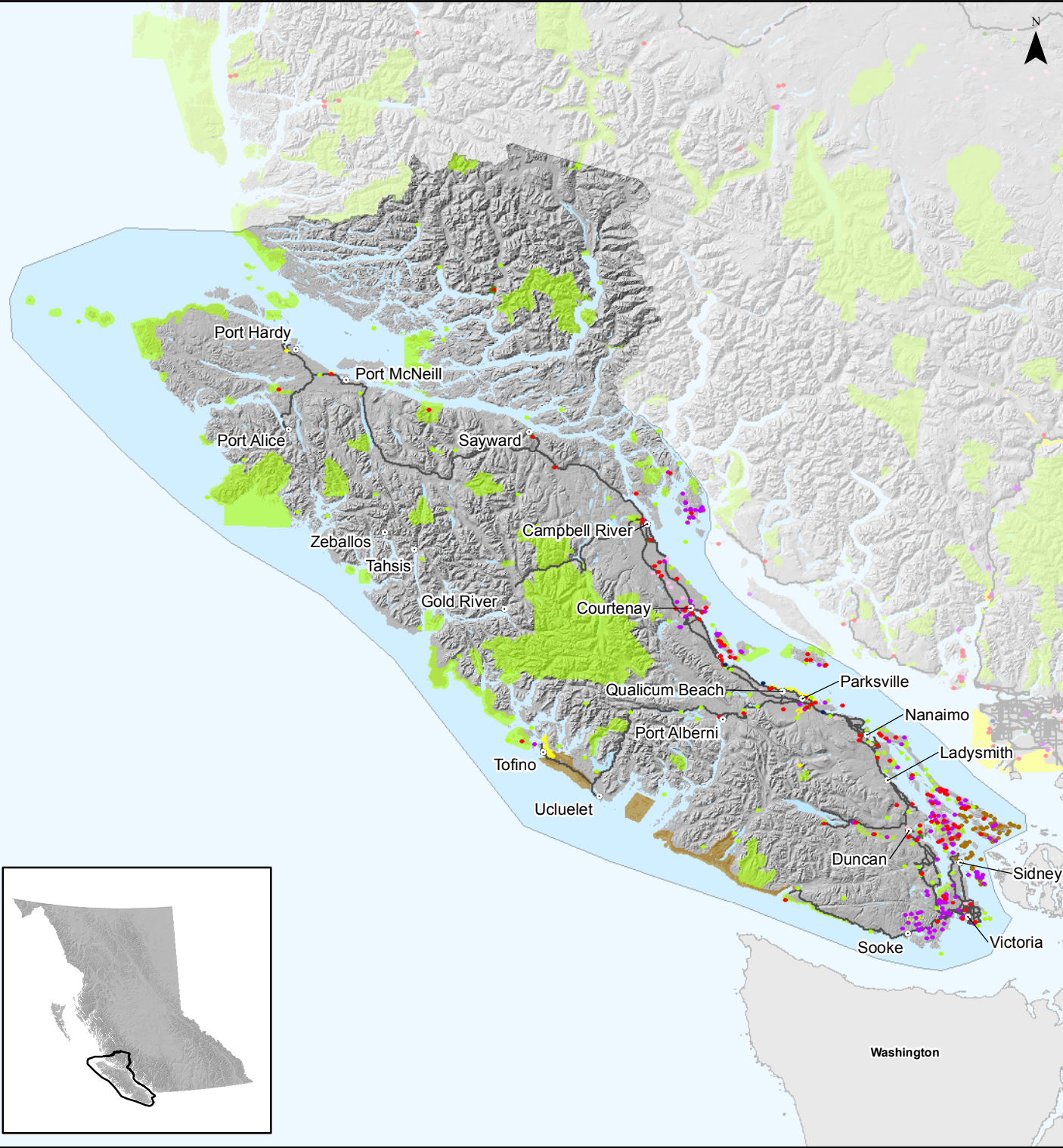
*Accuracy of some conservation areas has not yet been quality assured by respective securement organizations.

0 50 100 Kilometers
BC Albers

BC NGO Conservation Areas Database Technical Working Group:



Layer	Source
Non-governmental Organization Conservation Areas	British Columbia NGO Conservation Areas Technical Working Group. 2014. BC NGO Conservation Areas Database - Fee Simple, Registerable Interests, and Unregisterable Interests (secured as of December 31, 2014). Digital data files. Last updated October 27, 2014. [ESRI Shapefile].
Provincial Protected Areas - Provincial Parks, Ecological Reserves, Recreation Areas, & Protected Areas	BCGOV FLNRO GeoBC. TANTALIS - Parks, Ecological Reserves, and Protected Areas. [ESRI Shapefile]. August 07, 2014.
Provincial Protected Areas - Conservancies	BCGOV FLNRO GeoBC. TANTALIS - Conservancy Areas. [ESRI Shapefile]. August 07, 2014.
Provincial Protected Areas - Wildlife Management Areas	BCGOV FLNRO GeoBC. Conservation Lands. [ESRI Shapefile]. August 08, 2014.
Provincial Protected Areas - Acquisition, Lease, and Transfer of Administration and Control Lands	BCGOV FLNRO GeoBC. Conservation Lands. [ESRI Shapefile]. August 08, 2014.
National Protected Areas - National Parks	CDNGOV Natural Resources Canada. National Parks - National Framework Canada Lands Administrative Boundaries Level 1. [ESRI Shapefile]. August 08, 2014.
National Protected Areas - National Wildlife Areas and other National Protected Areas	Environment Canada (Canadian Wildlife Service). CWS Protected Areas. [ESRI Shapefile]. June 2012.
Region Boundaries	BCGOV ENV Knowledge Management Branch. ENV Regional Boundaries. [ESRI Shapefile]. June 07, 2012.
Lakes and Rivers	LRDW. Digital Base Mapping at 1:2M. [ESRI Shapefile]. June 2006.
Relief BC Basemap	DataBC Geographic Services. Hillshade Imagery [WMS].
Canada & USA Basemaps	ESRI. [ESRI Shapefile].



British Columbia Conservation Areas: Lower Mainland

Non-governmental Organization Conservation Areas

- Fee Simple
- Covenants and Other Registered Interests on Title
- Agreements and Other Unregistered Interests Not on Title*

Provincial Protected Areas

- Provincial Parks, Ecological Reserves, Recreation Areas, Protected Areas, and Conservancies
- Wildlife Management Areas
- Ministry of Forests, Lands and Natural Resource Operations Acquisition, Lease, and Transfer of Administration and Control Lands

National Protected Areas

- National Parks
- National Wildlife Areas and other National Protected Areas
- Highways

Points represent conservation areas that are less than 500 hectares; polygons represent those that are greater than 500 hectares.

Some points may be obscured by overlying points.

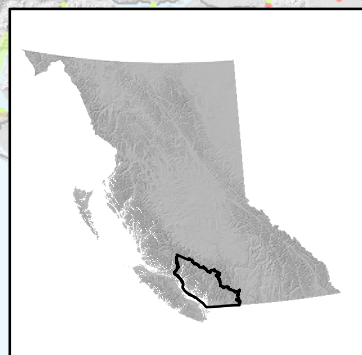
*Accuracy of some conservation areas has not yet been quality assured by respective securement organizations.

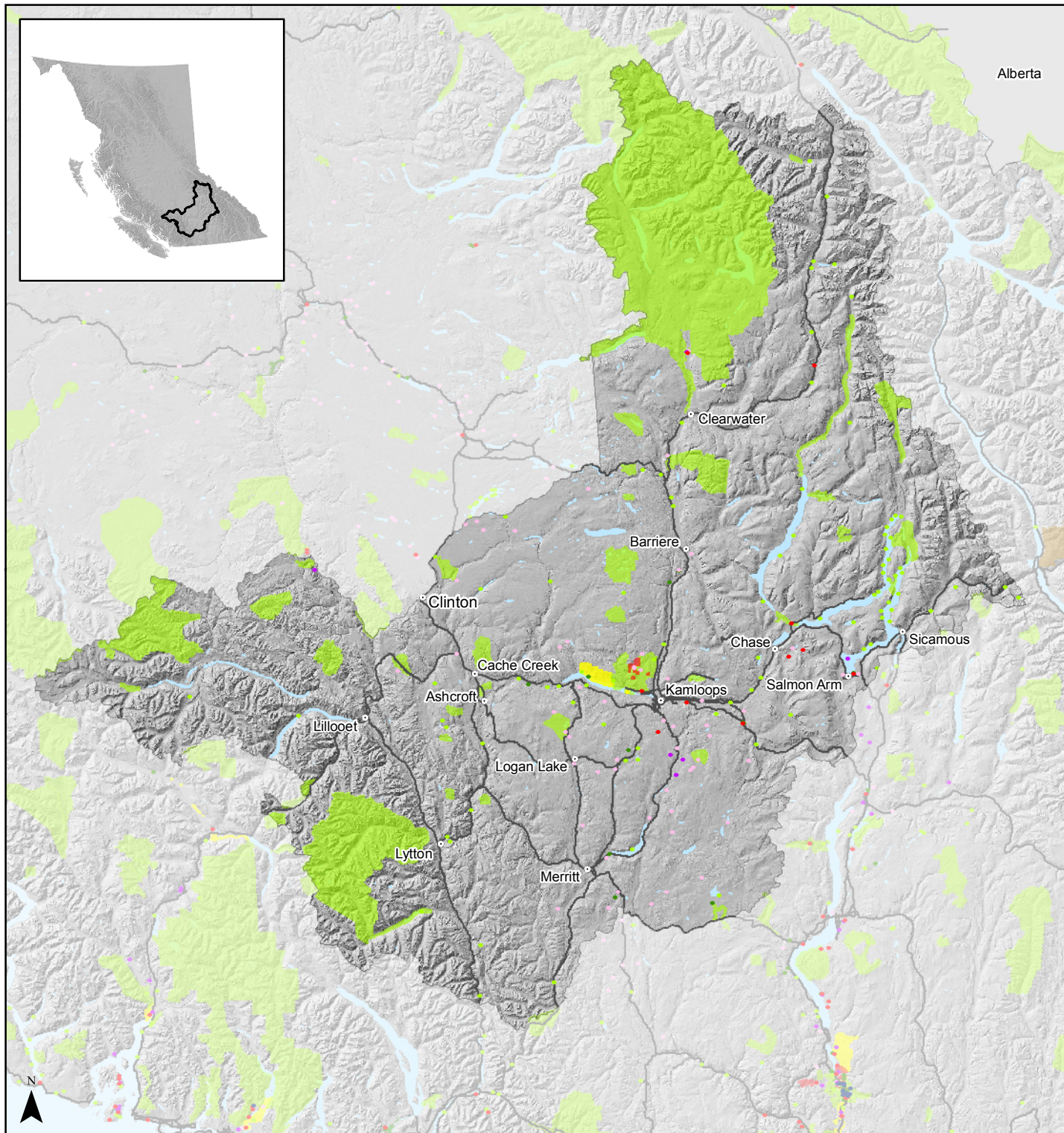
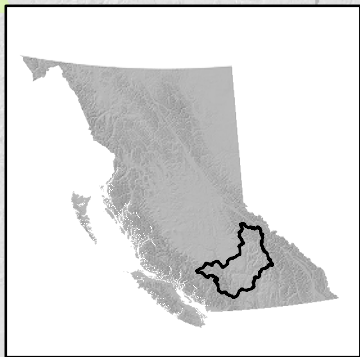


BC NGO Conservation Areas Database Technical Working Group:



Layer	Source
Non-governmental Organization Conservation Areas	British Columbia NGO Conservation Areas Technical Working Group. 2014. BC NGO Conservation Areas Database - Fee Simple, Registerable Interests, and Unregisterable Interests (secured as of December 31, 2014). Digital data files. Last updated October 27, 2014. [ESRI Shapefile].
Provincial Protected Areas - Provincial Parks, Ecological Reserves, Recreation Areas, & Protected Areas	BCGOV FLNRO GeoBC. TANTALIS - Parks, Ecological Reserves, and Protected Areas. [ESRI Shapefile]. August 07, 2014.
Provincial Protected Areas - Conservancies	BCGOV FLNRO GeoBC. TANTALIS - Conservancy Areas. [ESRI Shapefile]. August 07, 2014.
Provincial Protected Areas - Wildlife Management Areas	BCGOV FLNRO GeoBC. Conservation Lands. [ESRI Shapefile]. August 08, 2014.
Provincial Protected Areas - Acquisition, Lease, and Transfer of Administration and Control Lands	BCGOV FLNRO GeoBC. Conservation Lands. [ESRI Shapefile]. August 08, 2014.
National Protected Areas - National Parks	CDNGOV Natural Resources Canada. National Parks - National Framework Canada Lands Administrative Boundaries Level 1. [ESRI Shapefile]. August 08, 2014.
National Protected Areas - National Wildlife Areas and other National Protected Areas	Environment Canada (Canadian Wildlife Service). CWS Protected Areas. [ESRI Shapefile]. June 2012.
Region Boundaries	BCGOV ENV Knowledge Management Branch. ENV Regional Boundaries. [ESRI Shapefile]. June 07, 2012.
Lakes and Rivers	LRDW. Digital Base Mapping at 1:2M. [ESRI Shapefile]. June 2006.
Relief BC Basemap	DataBC Geographic Services. Hillshade Imagery [WMS].
Canada & USA Basemaps	ESRI [ESRI Shapefile].





British Columbia Conservation Areas: Thompson

Non-governmental Organization Conservation Areas

- Fee Simple
- Covenants and Other Registered Interests on Title
- Agreements and Other Unregistered Interests Not on Title*

Provincial Protected Areas

- Provincial Parks, Ecological Reserves, Recreation Areas, Protected Areas, and Conservancies
- Wildlife Management Areas
- Ministry of Forests, Lands and Natural Resource Operations Acquisition, Lease, and Transfer of Administration and Control Lands

National Protected Areas

- National Parks
- National Wildlife Areas and other National Protected Areas
- Highways

Points represent conservation areas that are less than 500 hectares; polygons represent those that are greater than 500 hectares.

Some points may be obscured by overlying points.

*Accuracy of some conservation areas has not yet been quality assured by respective securement organizations.



BC NGO Conservation Areas Database Technical Working Group:



Layer	Source
Non-governmental Organization Conservation Areas	British Columbia NGO Conservation Areas Technical Working Group. 2014. BC NGO Conservation Areas Database - Fee Simple, Registerable Interests, and Unregisterable Interests (secured as of December 31, 2014). Digital data files. Last updated October 27, 2014. [ESRI Shapefile].
Provincial Protected Areas - Provincial Parks, Ecological Reserves, Recreation Areas, & Protected Areas	BCGOV FLNRO GeoBC. TANTALIS - Parks, Ecological Reserves, and Protected Areas. [ESRI Shapefile]. August 07, 2014.
Provincial Protected Areas - Conservancies	BCGOV FLNRO GeoBC. TANTALIS - Conservancy Areas. [ESRI Shapefile]. August 07, 2014.
Provincial Protected Areas - Wildlife Management Areas	BCGOV FLNRO GeoBC. Conservation Lands. [ESRI Shapefile]. August 08, 2014.
Provincial Protected Areas - Acquisition, Lease, and Transfer of Administration and Control Lands	BCGOV FLNRO GeoBC. Conservation Lands. [ESRI Shapefile]. August 08, 2014.
National Protected Areas - National Parks	CDNGOV Natural Resources Canada. National Parks - National Framework Canada Lands Administrative Boundaries Level 1. [ESRI Shapefile]. August 08, 2014.
National Protected Areas - National Wildlife Areas and other National Protected Areas	Environment Canada (Canadian Wildlife Service). CWS Protected Areas. [ESRI Shapefile]. June 2012.
Region Boundaries	BCGOV ENV Knowledge Management Branch. ENV Regional Boundaries. [ESRI Shapefile]. June 07, 2012.
Lakes and Rivers	LRDW. Digital Base Mapping at 1:2M. [ESRI Shapefile]. June 2006.
Relief BC Basemap	DataBC Geographic Services. Hillshade Imagery [WMS].
Canada & USA Basemaps	ESRI [ESRI Shapefile].

British Columbia Conservation Areas: Kootenay

Non-governmental Organization Conservation Areas

- Fee Simple
- Covenants and Other Registered Interests on Title
- Agreements and Other Unregistered Interests Not on Title*

Provincial Protected Areas

- Provincial Parks, Ecological Reserves, Recreation Areas, Protected Areas, and Conservancies
- Wildlife Management Areas
- Ministry of Forests, Lands and Natural Resource Operations Acquisition, Lease, and Transfer of Administration and Control Lands

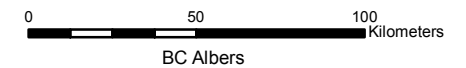
National Protected Areas

- National Parks
- National Wildlife Areas and other National Protected Areas
- Highways

Points represent conservation areas that are less than 500 hectares; polygons represent those that are greater than 500 hectares.

Some points may be obscured by overlying points.

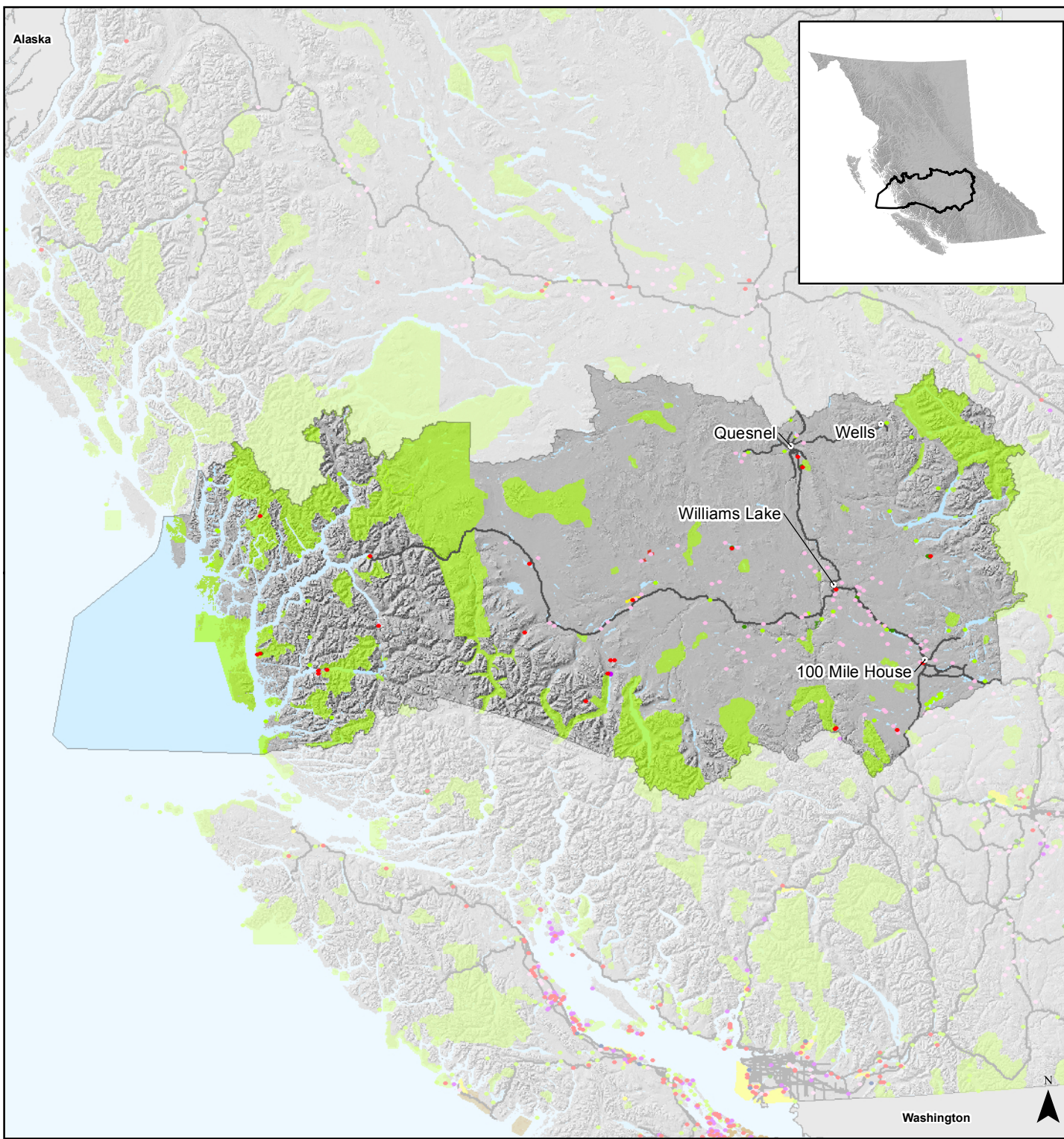
*Accuracy of some conservation areas has not yet been quality assured by respective securement organizations.



BC NGO Conservation Areas Database Technical Working Group:



Layer	Source
Non-governmental Organization Conservation Areas	British Columbia NGO Conservation Areas Technical Working Group. 2014. BC NGO Conservation Areas Database - Fee Simple, Registerable Interests, and Unregisterable Interests (secured as of December 31, 2014). Digital data files. Last updated October 27, 2014. [ESRI Shapefile].
Provincial Protected Areas - Provincial Parks, Ecological Reserves, Recreation Areas, & Protected Areas	BCGOV FLNRO GeoBC. TANTALIS - Parks, Ecological Reserves, and Protected Areas. [ESRI Shapefile]. August 07, 2014.
Provincial Protected Areas - Conservancies	BCGOV FLNRO GeoBC. TANTALIS - Conservancy Areas. [ESRI Shapefile]. August 07, 2014.
Provincial Protected Areas - Wildlife Management Areas	BCGOV FLNRO GeoBC. Conservation Lands. [ESRI Shapefile]. August 08, 2014.
Provincial Protected Areas - Acquisition, Lease, and Transfer of Administration and Control Lands	BCGOV FLNRO GeoBC. Conservation Lands. [ESRI Shapefile]. August 08, 2014.
National Protected Areas - National Parks	CDNGOV Natural Resources Canada. National Parks - National Framework Canada Lands Administrative Boundaries Level 1. [ESRI Shapefile]. August 08, 2014.
National Protected Areas - National Wildlife Areas and other National Protected Areas	Environment Canada (Canadian Wildlife Service). CWS Protected Areas. [ESRI Shapefile]. June 2012.
Region Boundaries	BCGOV ENV Knowledge Management Branch. ENV Regional Boundaries. [ESRI Shapefile]. June 07, 2012.
Lakes and Rivers	LRDW. Digital Base Mapping at 1:2M. [ESRI Shapefile]. June 2006.
Relief BC Basemap	DataBC Geographic Services. Hillshade Imagery [WMS].
Canada & USA Basemaps	ESRI [ESRI Shapefile].



British Columbia Conservation Areas: Cariboo

Non-governmental Organization Conservation Areas

- Fee Simple
- Covenants and Other Registered Interests on Title
- Agreements and Other Unregistered Interests Not on Title*

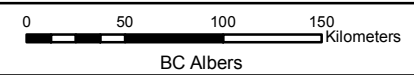
Provincial Protected Areas

- Provincial Parks, Ecological Reserves, Recreation Areas, Protected Areas, and Conservancies
- Wildlife Management Areas
- Ministry of Forests, Lands and Natural Resource Operations Acquisition, Lease, and Transfer of Administration and Control Lands

National Protected Areas

- National Parks
- National Wildlife Areas and other National Protected Areas
- Highways

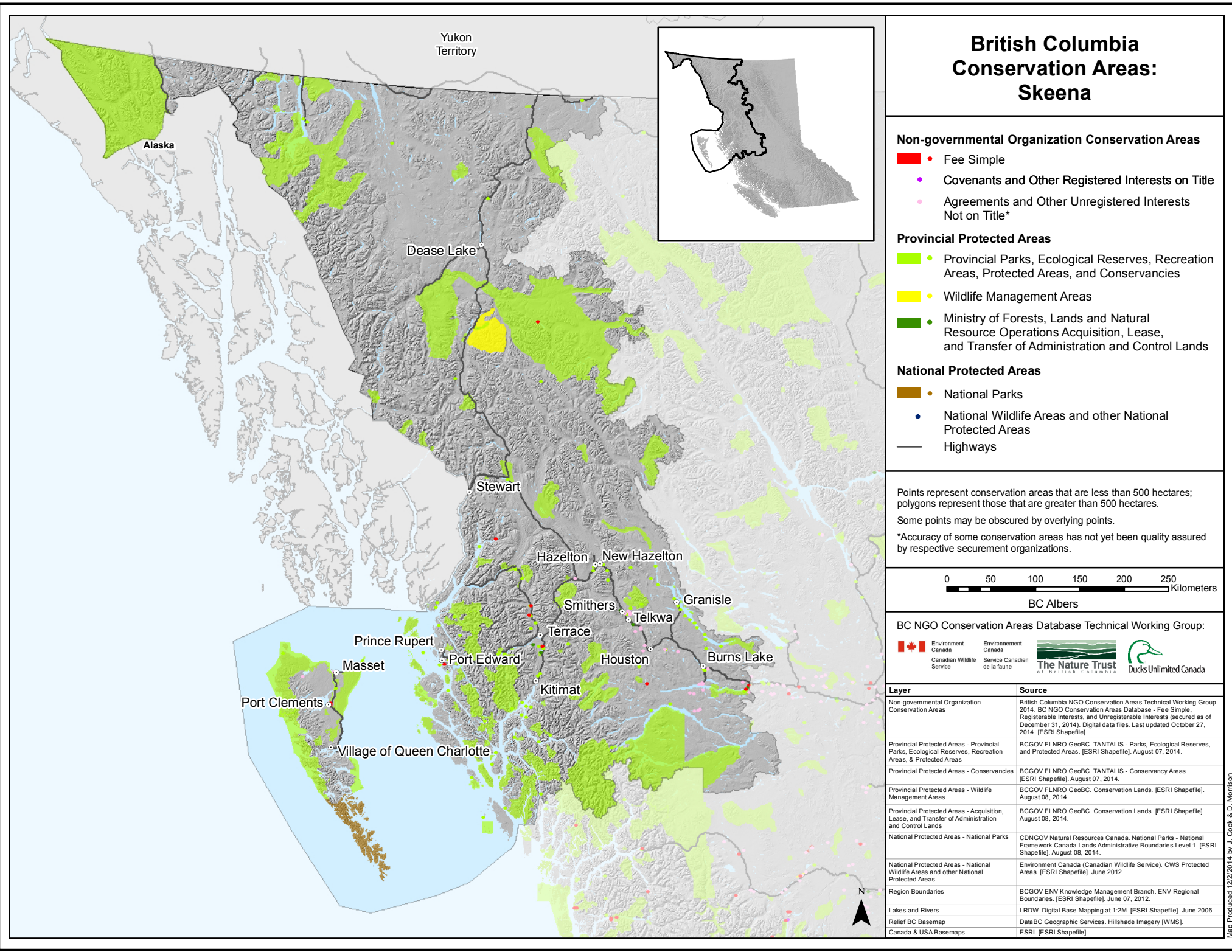
Points represent conservation areas that are less than 500 hectares; polygons represent those that are greater than 500 hectares.
Some points may be obscured by overlying points.
*Accuracy of some conservation areas has not yet been quality assured by respective securement organizations.



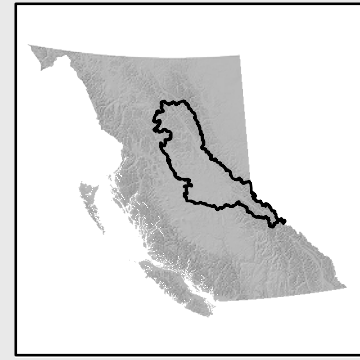
BC NGO Conservation Areas Database Technical Working Group:



Layer	Source
Non-governmental Organization Conservation Areas	British Columbia NGO Conservation Areas Technical Working Group. 2014. BC NGO Conservation Areas Database - Fee Simple, Registerable Interests, and Unregisterable Interests (secured as of December 31, 2014). Digital data files. Last updated October 27, 2014. [ESRI Shapefile].
Provincial Protected Areas - Provincial Parks, Ecological Reserves, Recreation Areas, & Protected Areas	BCGOV FLNRO GeoBC. TANTALIS - Parks, Ecological Reserves, and Protected Areas. [ESRI Shapefile]. August 07, 2014.
Provincial Protected Areas - Conservancies	BCGOV FLNRO GeoBC. TANTALIS - Conservancy Areas. [ESRI Shapefile]. August 07, 2014.
Provincial Protected Areas - Wildlife Management Areas	BCGOV FLNRO GeoBC. Conservation Lands. [ESRI Shapefile]. August 08, 2014.
Provincial Protected Areas - Acquisition, Lease, and Transfer of Administration and Control Lands	BCGOV FLNRO GeoBC. Conservation Lands. [ESRI Shapefile]. August 08, 2014.
National Protected Areas - National Parks	CDNGOV Natural Resources Canada. National Parks - National Framework Canada Lands Administrative Boundaries Level 1. [ESRI Shapefile]. August 08, 2014.
National Protected Areas - National Wildlife Areas and other National Protected Areas	Environment Canada (Canadian Wildlife Service). CWS Protected Areas. [ESRI Shapefile]. June 2012.
Region Boundaries	BCGOV ENV Knowledge Management Branch. ENV Regional Boundaries. [ESRI Shapefile]. June 07, 2012.
Lakes and Rivers	LRDW. Digital Base Mapping at 1:2M. [ESRI Shapefile]. June 2006.
Relief BC Basemap	DataBC Geographic Services. Hillshade Imagery [WMS].
Canada & USA Basemaps	ESRI. [ESRI Shapefile].



British Columbia Conservation Areas: Omineca

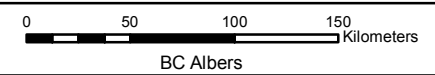


- Non-governmental Organization Conservation Areas**
- Fee Simple
 - Covenants and Other Registered Interests on Title
 - Agreements and Other Unregistered Interests Not on Title*

- Provincial Protected Areas**
- Provincial Parks, Ecological Reserves, Recreation Areas, Protected Areas, and Conservancies
 - Wildlife Management Areas
 - Ministry of Forests, Lands and Natural Resource Operations Acquisition, Lease, and Transfer of Administration and Control Lands

- National Protected Areas**
- National Parks
 - National Wildlife Areas and other National Protected Areas
- Highways

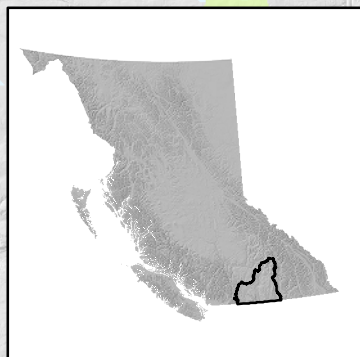
Points represent conservation areas that are less than 500 hectares; polygons represent those that are greater than 500 hectares.
Some points may be obscured by overlying points.
*Accuracy of some conservation areas has not yet been quality assured by respective securement organizations.



BC NGO Conservation Areas Database Technical Working Group:



Layer	Source
Non-governmental Organization Conservation Areas	British Columbia NGO Conservation Areas Technical Working Group. 2014. BC NGO Conservation Areas Database - Fee Simple, Registerable Interests, and Unregisterable Interests (secured as of December 31, 2014). Digital data files. Last updated October 27, 2014. [ESRI Shapefile].
Provincial Protected Areas - Provincial Parks, Ecological Reserves, Recreation Areas, & Protected Areas	BCGOV FLNRO GeoBC. TANTALIS - Parks, Ecological Reserves, and Protected Areas. [ESRI Shapefile]. August 07, 2014.
Provincial Protected Areas - Conservancies	BCGOV FLNRO GeoBC. TANTALIS - Conservancy Areas. [ESRI Shapefile]. August 07, 2014.
Provincial Protected Areas - Wildlife Management Areas	BCGOV FLNRO GeoBC. Conservation Lands. [ESRI Shapefile]. August 08, 2014.
Provincial Protected Areas - Acquisition, Lease, and Transfer of Administration and Control Lands	BCGOV FLNRO GeoBC. Conservation Lands. [ESRI Shapefile]. August 08, 2014.
National Protected Areas - National Parks	CDNGOV Natural Resources Canada. National Parks - National Framework Canada Lands Administrative Boundaries Level 1. [ESRI Shapefile]. August 08, 2014.
National Protected Areas - National Wildlife Areas and other National Protected Areas	Environment Canada (Canadian Wildlife Service). CWS Protected Areas. [ESRI Shapefile]. June 2012.
Region Boundaries	BCGOV ENV Knowledge Management Branch. ENV Regional Boundaries. [ESRI Shapefile]. June 07, 2012.
Lakes and Rivers	LRDW. Digital Base Mapping at 1:2M. [ESRI Shapefile]. June 2006.
Relief BC Basemap	DataBC Geographic Services. Hillshade Imagery [WMS].
Canada & USA Basemaps	ESRI [ESRI Shapefile].



British Columbia Conservation Areas: Okanagan

Non-governmental Organization Conservation Areas

- Fee Simple
- Covenants and Other Registered Interests on Title
- Agreements and Other Unregistered Interests Not on Title*

Provincial Protected Areas

- Provincial Parks, Ecological Reserves, Recreation Areas, Protected Areas, and Conservancies
- Wildlife Management Areas
- Ministry of Forests, Lands and Natural Resource Operations Acquisition, Lease, and Transfer of Administration and Control Lands

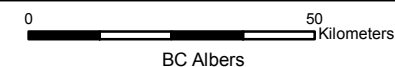
National Protected Areas

- National Parks
- National Wildlife Areas and other National Protected Areas
- Highways

Points represent conservation areas that are less than 500 hectares; polygons represent those that are greater than 500 hectares.

Some points may be obscured by overlying points.

*Accuracy of some conservation areas has not yet been quality assured by respective securement organizations.



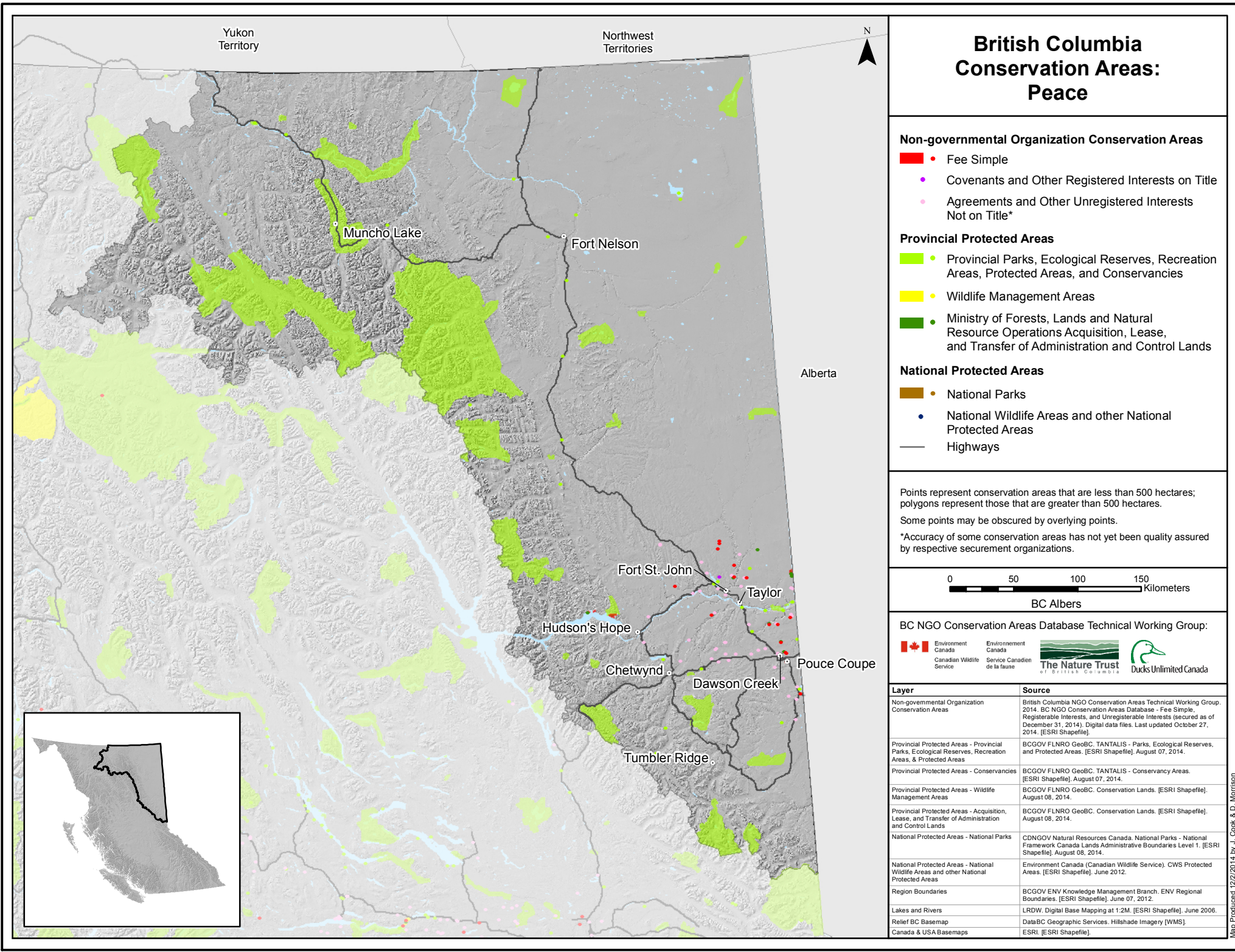
BC NGO Conservation Areas Database Technical Working Group:



Layer	Source
Non-governmental Organization Conservation Areas	British Columbia NGO Conservation Areas Technical Working Group. 2014. BC NGO Conservation Areas Database - Fee Simple, Registrable Interests, and Unregistrable Interests (secured as of December 31, 2014). Digital data files. Last updated October 27, 2014. [ESRI Shapefile].
Provincial Protected Areas - Provincial Parks, Ecological Reserves, Recreation Areas, & Protected Areas	BCGOV FLNRO GeoBC. TANTALIS - Parks, Ecological Reserves, and Protected Areas. [ESRI Shapefile]. August 07, 2014.
Provincial Protected Areas - Conservancies	BCGOV FLNRO GeoBC. TANTALIS - Conservancy Areas. [ESRI Shapefile]. August 07, 2014.
Provincial Protected Areas - Wildlife Management Areas	BCGOV FLNRO GeoBC. Conservation Lands. [ESRI Shapefile]. August 08, 2014.
Provincial Protected Areas - Acquisition, Lease, and Transfer of Administration and Control Lands	BCGOV FLNRO GeoBC. Conservation Lands. [ESRI Shapefile]. August 08, 2014.
National Protected Areas - National Parks	CDNGOV Natural Resources Canada. National Parks - National Framework Canada Lands Administrative Boundaries Level 1. [ESRI Shapefile]. August 08, 2014.
National Protected Areas - National Wildlife Areas and other National Protected Areas	Environment Canada (Canadian Wildlife Service). CWS Protected Areas. [ESRI Shapefile]. June 2012.
Region Boundaries	BCGOV ENV Knowledge Management Branch. ENV Regional Boundaries. [ESRI Shapefile]. June 07, 2012.
Lakes and Rivers	LRDW. Digital Base Mapping at 1:2M. [ESRI Shapefile]. June 2006.
Relief BC Basemap	DataBC Geographic Services. Hillshade Imagery [WMS].
Canada & USA Basemaps	ESRI. [ESRI Shapefile].

Washington





Conservation Area by NGO Securement Organization

Securement Organization	Conservation Area Subtype			Total (ha)
	Fee Simple (ha)	Covenants and Other Registered Interests on Title (ha)	Agreements and Other Unregistered Interests Not on Title (ha)*	
American Friends of Canadian Land Trusts		5.8		5.8
Bowen Island Conservancy		1.7		1.7
Bowen Island Local Trust Committee		9.4		9.4
Brown Property Preservation Society		18.9		18.9
Central Okanagan Land Trust	66.3	4.8		71.1
Comox Strathcona Natural History Society		4.3		4.3
Comox Valley Land Trust		110.5		110.5
Conservancy Hornby Island		23.5		23.5
Cowichan Land Trust		116.4		116.4
Denman Conservancy Association	124.2	196.2		320.4
Ducks Unlimited Canada	10,112.2	307.1	160,031.60	170,451
Fraser Valley Conservancy	11.5	0.4		11.9
Gabriola Historical and Museum Society		0.2		0.2
Gabriola Island Local Trust Committee		0.6		0.6
Gabriola Land and Trails Trust		65.2		65.2
Galiano Conservancy Association	177.8	216.2		394.0
Galiano Island Local Trust Committee		54.4		54.4
Gambier Island Conservancy		149.1		149.1
Garry Oak Meadow Preservation Society		8.4		8.4
Habitat Acquisition Trust	1.0	1,637.0		1,638.0
Islands Trust Fund Board	593.2	544.5		1,137.7
Kootenay Land Trust Society		63.7		63.7
Lasqueti Island Nature Conservancy		57.6		57.6
Mayne Island Conservancy Society		0.5		0.5
Mayne Island Trust Committee		0.5		0.5
Nanaimo & Area Land Trust		184.2		184.2
Nature Conservancy of Canada	71,742.6	7,365.4	214.3	79,322.2
North Okanagan Parks and Natural Area Trust		6.4		6.4
North Pender Island Local Trust Committee		53.3		53.3
Okanagan Region Wildlife Heritage Fund Society	43.1			43.1
Quadra Island Conservancy and Stewardship Society	23.0	127.3		150.4
Rosewall-Bonnel Land Trust Society		1.0		1.0
Saltspring Island Conservancy	235.3	306.4		541.8
Saltspring Island Local Trust Committee		193.1		193.1
Saltspring Island Water Preservation Society	210.7	43.5		254.2
Saturna Island Local Trust Committee		11.0		11.0
Sunshine Coast Conservation Association		149.1		149.1
The Galiano Club	345.4			345.4
The Land Conservancy of BC	3,905.7	5,237.4	1.7	9,144.8
The Nature Trust of British Columbia	21,397.5	1,714.3		23,111.8
Turtle Island Earth Stewards Society	0.6	382.9		383.5
Wild Bird Trust	5.1	0.3		5.4
Total Area**	102,085.6	15,935.6	160,247.6	153,830.3

As there can be more than one Conservation Area Subtype with interest in a conservation area, summing the area values for all Conservation Area Subtypes would lead to an overvaluation in the total conserved area. The "Total Area" removes the overvaluation and reflects the true conserved area.

*The area value contains some uncertainty. It is sourced directly from respective securement organizations, Ducks Unlimited Canada and the Nature Conservancy of Canada.

**Total Area may change as uncertainty is reduced for Agreements and Other Unregistered Interests Not on Title.

Data Recognition:

British Columbia NGO Conservation Areas Technical Working Group. 2014. BC NGO Conservation Areas Database – Fee Simple, Registerable Interests, and Unregisterable Interests (secured as of December 31, 2013). Digital data files. Last updated October 27, 2014.