



Guide for Children



Land Trust Alliance
BRITISH COLUMBIA

WE LIVE IN BEAUTIFUL BRITISH COLUMBIA

Which province is BC located?

10!



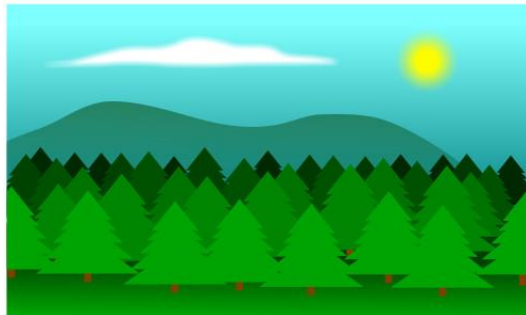
BC has many different types of landscapes



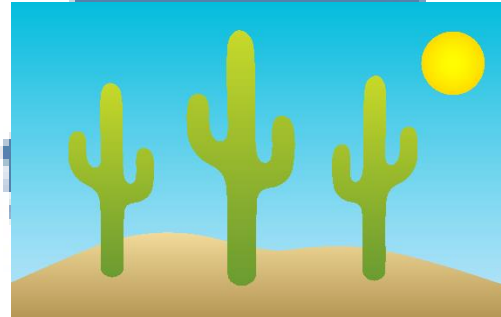
Mountains



Beaches



Forests



Deserts



Islands

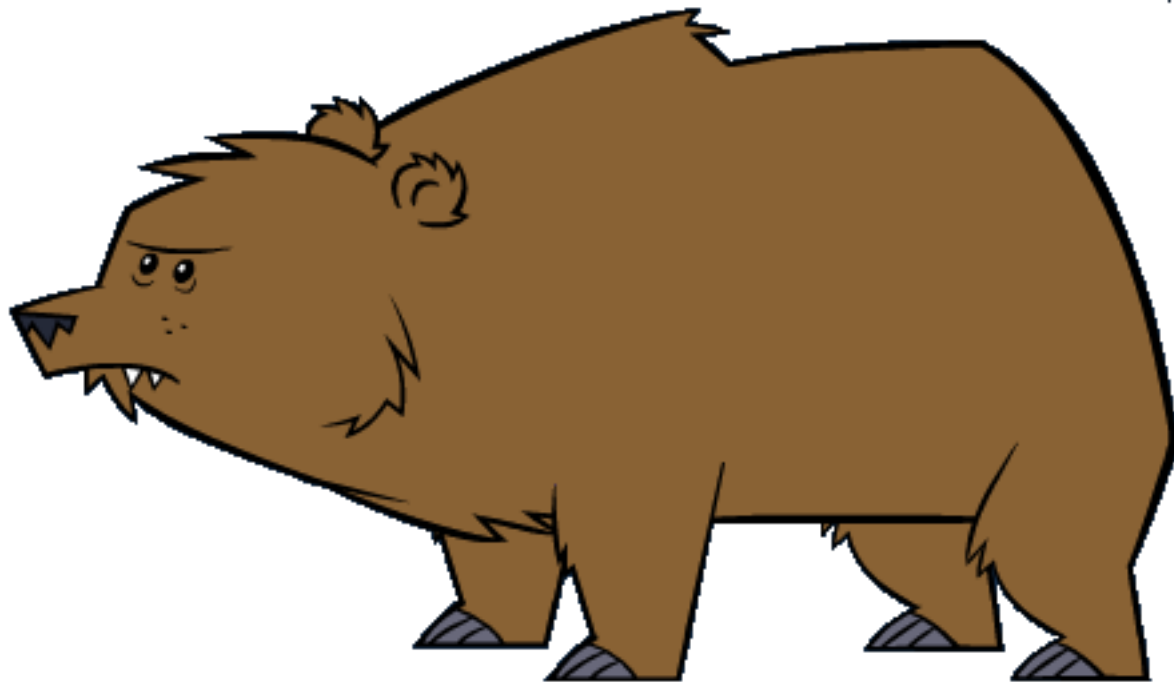
**BC also has many different types of plants
and animals that make these different
landscapes their homes.**



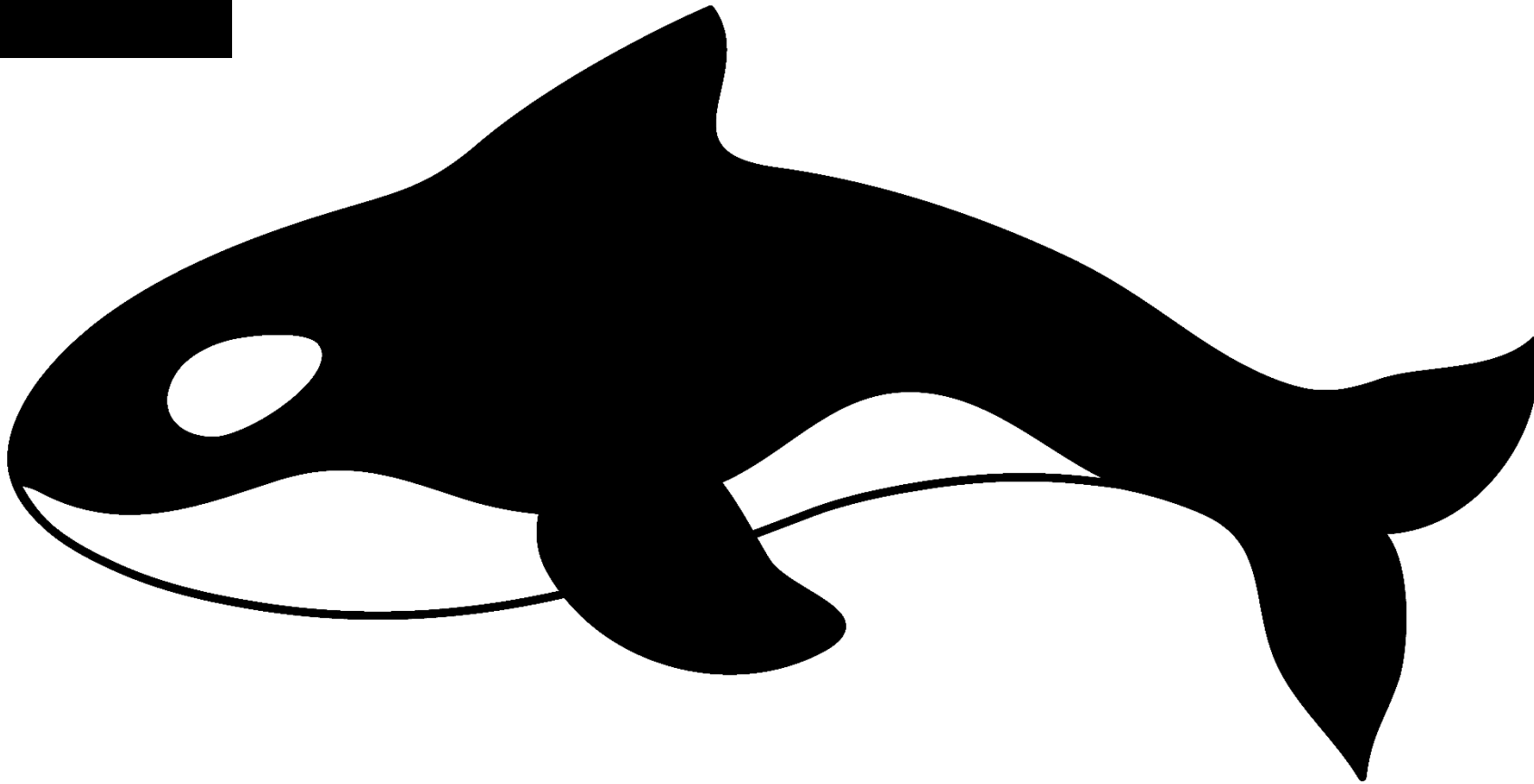
These animals include...



GRIZZLY BEAR

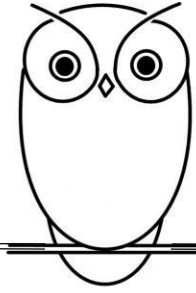


ORCA



(also known as) the KILLER WHALE

BURROWING OWL



... But did you know that these animals are considered at risk?



This means that they are either of:

- **SPECIAL CONCERN**



- **THREATENED**

or

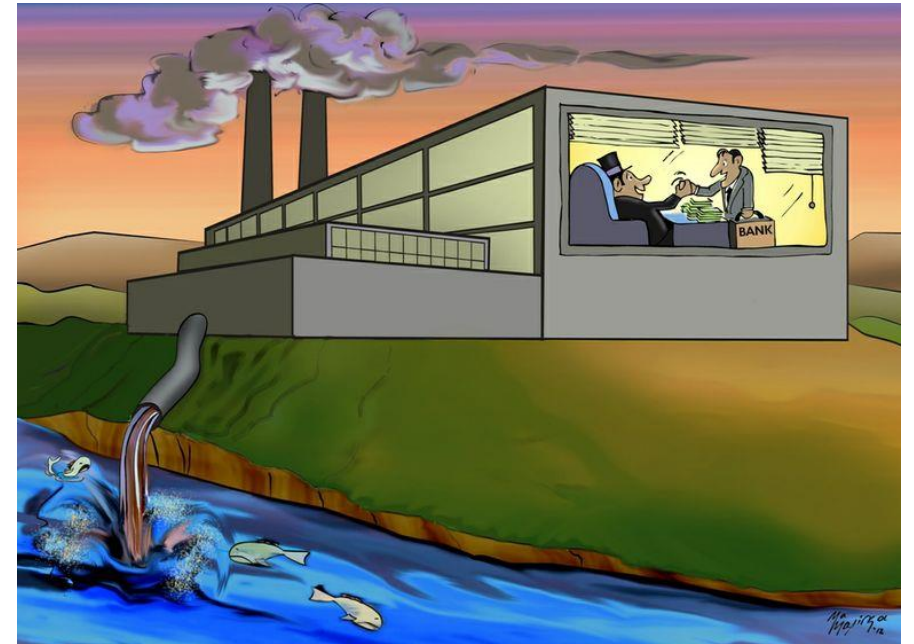


- **ENDANGERED**

but thankfully they are not yet **EXTINCT.**

These animals, and many others, are at risk because some human activities...

- Make them sick,
 - Ruin their food, and/or
 - Lead to the loss of their homes



For this reason, and others, we must work to conserve the land in BC

- **Conserve** means to protect something from harm or destruction, especially an environmentally or culturally important place or thing.



To help protect BC's wildlife, we must also
protect its lands

A vibrant, cartoon-style illustration of a forest landscape. In the foreground, a sandy path leads towards a large, brown wooden signpost. The signpost has a rectangular sign with the words "Protected Land" written in a white, serif font. The sign is attached to two vertical wooden posts. To the left of the sign, there is a large, green, mossy rock. In the background, there are rolling green hills, a blue sky with light clouds, and a large, dark green tree on the right. Several colorful mushrooms are scattered throughout the scene: a large red one with white spots on the left, a green one with white spots next to it, a purple one with white spots further back, and a pink one with white spots in the foreground near the path. The overall scene is bright and cheerful, emphasizing the importance of protecting natural habitats.

Protected Land

Can YOU think of any other reasons why we should protect the land in BC?



Top 5 Reasons




1



Protect the environment from further
development and pollution.



2



Promote healthy ecosystems, which
increases our quality of life



Preserve hiking trails/campgrounds
and places for people to explore.



3



Preserve the natural beauty of BC.



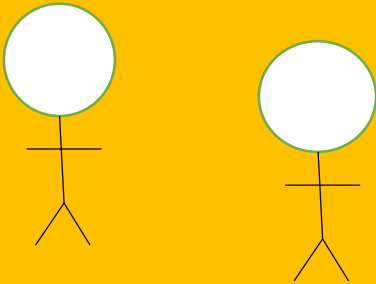
4



5



Protect areas that have special meaning to local communities.



LAND TRUSTS

- The Land Trust Alliance of BC works with Land Trusts in across BC to protect and preserve BC's natural areas and wildlife!
 - We work with 33 land trusts!
- It has already helped protect over 1 million acres of land in BC
 - That is as much as 123,700 hockey rinks!



Land Trust Alliance
BRITISH COLUMBIA

Have you ever wondered where parks come from?

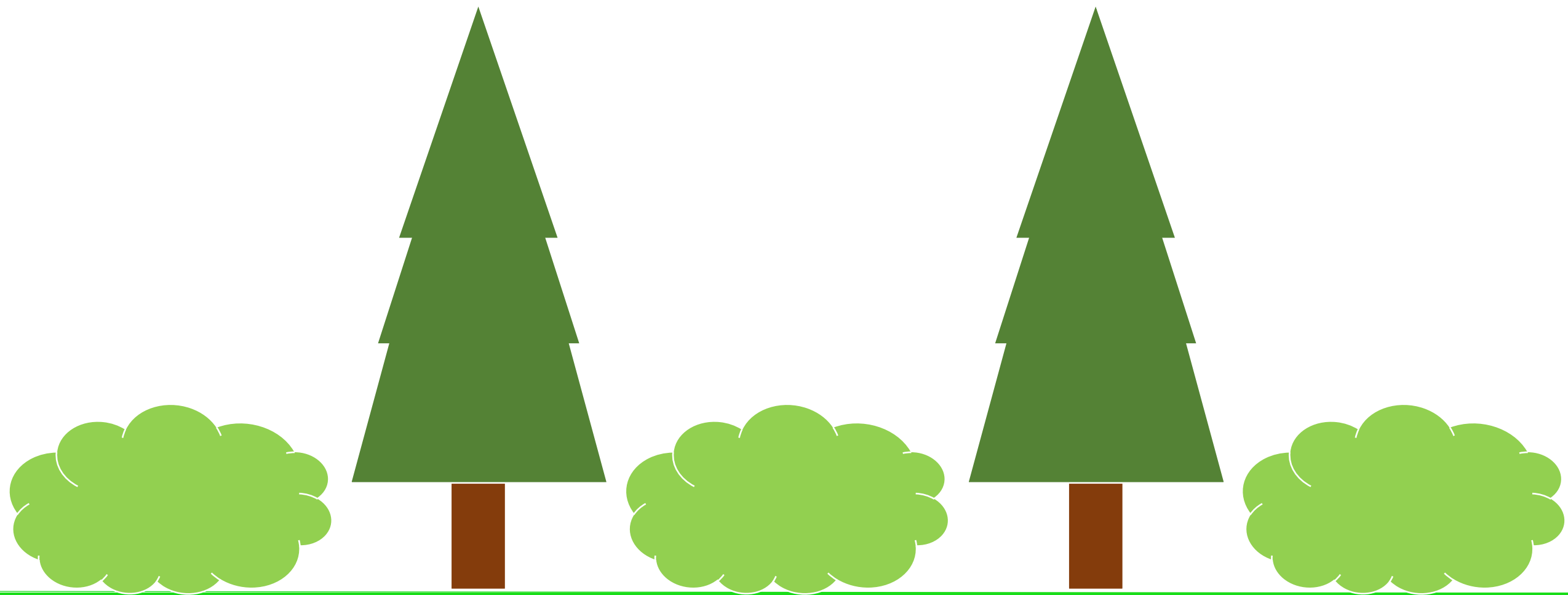


How do they protect the land?

Land Trusts will
sometimes buy land.

They will also work with
landowners or the
government to help them
buy or protect the land.

OTHER IMPORTANT WORKS OF LAND TRUSTS ARE TO...

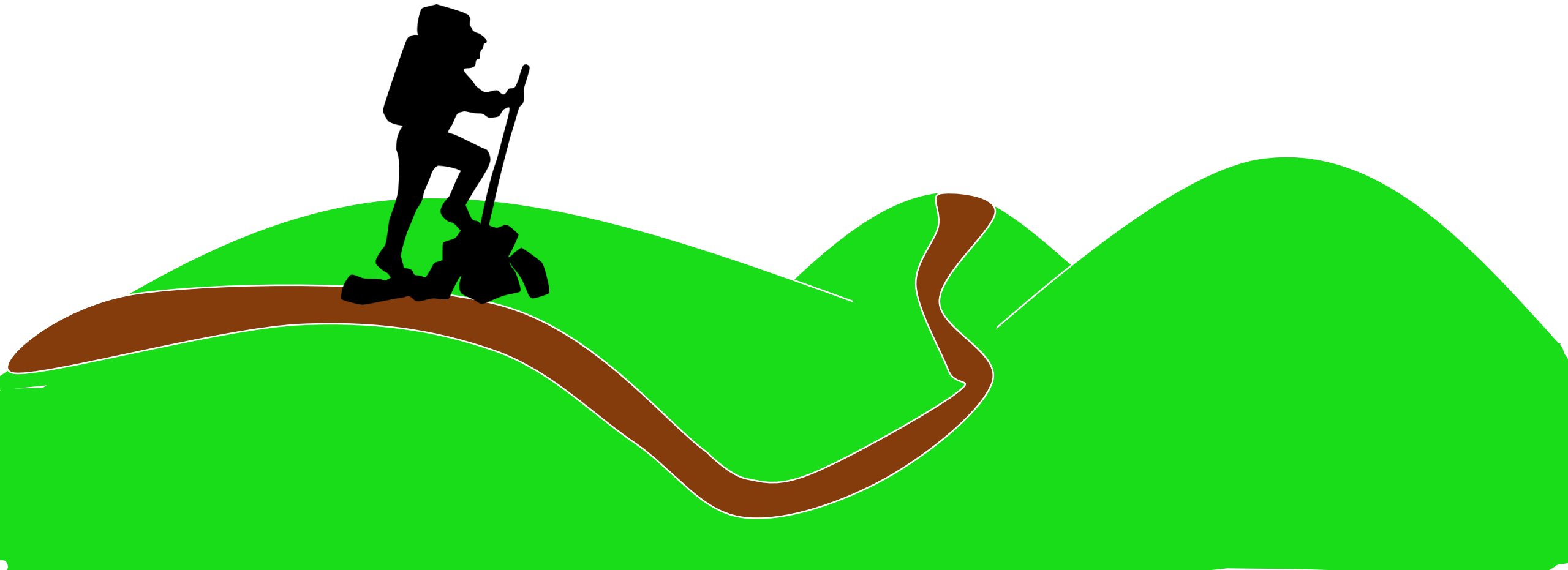


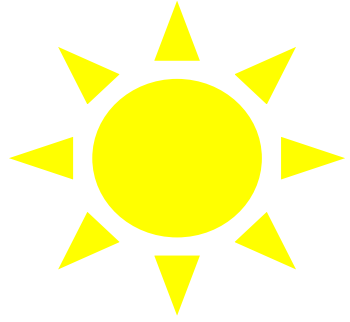
Protect native forests and grasslands that provide wildlife habitat and help to reduce the effects of climate change.



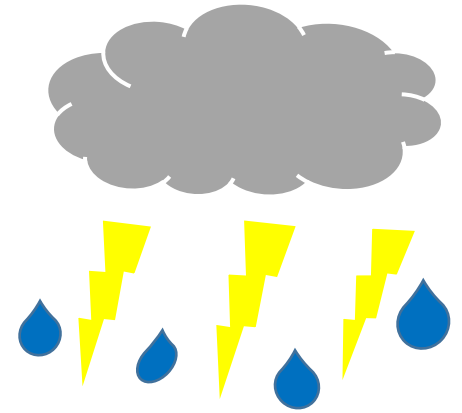

Increase water quality by protecting wetlands, streams and rivers.

Protect local parks and trails for people to enjoy and explore.





CLIMATE CHANGE

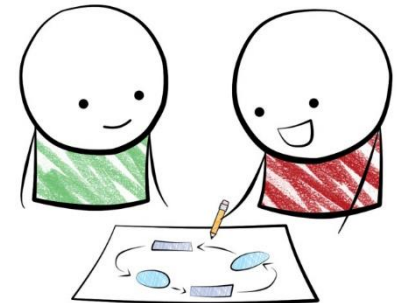


Climate change is the change in the permanent weather pattern that creates **Global Warming**, which is the increase in average temperature of the earth's atmosphere and its oceans.

LAND TRUSTS WORK TO SLOW DOWN **GLOBAL WARMING** AND
SAVE OUR EARTH!

WAYS FOR YOU TO GET INVOLVED!

- **VOLUNTEER** with your local land trust and help with a project
- Raise money to **SUPPORT A LAND TRUST PROJECT**
- **TELL A STORY** with photos, videos, or in writing about your project to your local land trust and post it online.

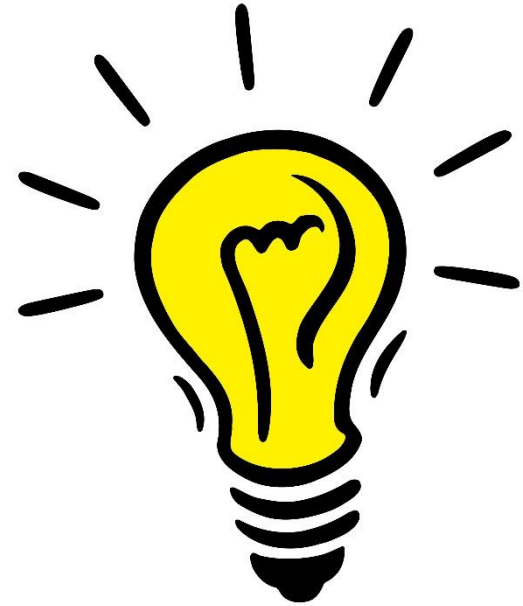




OTHER WAYS TO HELP

Reduce your environmental impact!

- **Ride your bike** instead of driving
- **Turn off the lights** when you leave a room (AND the TV!)
- **Unplug electronics** that you aren't using (including chargers)
- **Turn off your computer at night**
- **Use the sun** to dry your clothes instead of a dryer
- **Eat more veggies** and less meat



REMEMBER

You are very important in protecting our land!

Your **EVERYDAY ACTIONS** have a large impact on the environment. Changing your behaviour NOW will positively impact our future!





Contact Us FOR MORE InFORMaTion



Website: www.ltabc.ca

Email: info@ltabc.ca

Phone: 250-590-1921

Facebook: <https://www.facebook.com/landtrustbc/>

Twitter: @landtrustbc

Instagram: @landtrustbc

Discussion Questions

- What does it mean by “species at risk?”
- What are the causes of environmental issues?
- What does conserve mean? And why is it important?
- What is a land trust? How do they protect the land?
- What are some of the ways to reduce environmental impact?



Land Trust Alliance
BRITISH COLUMBIA